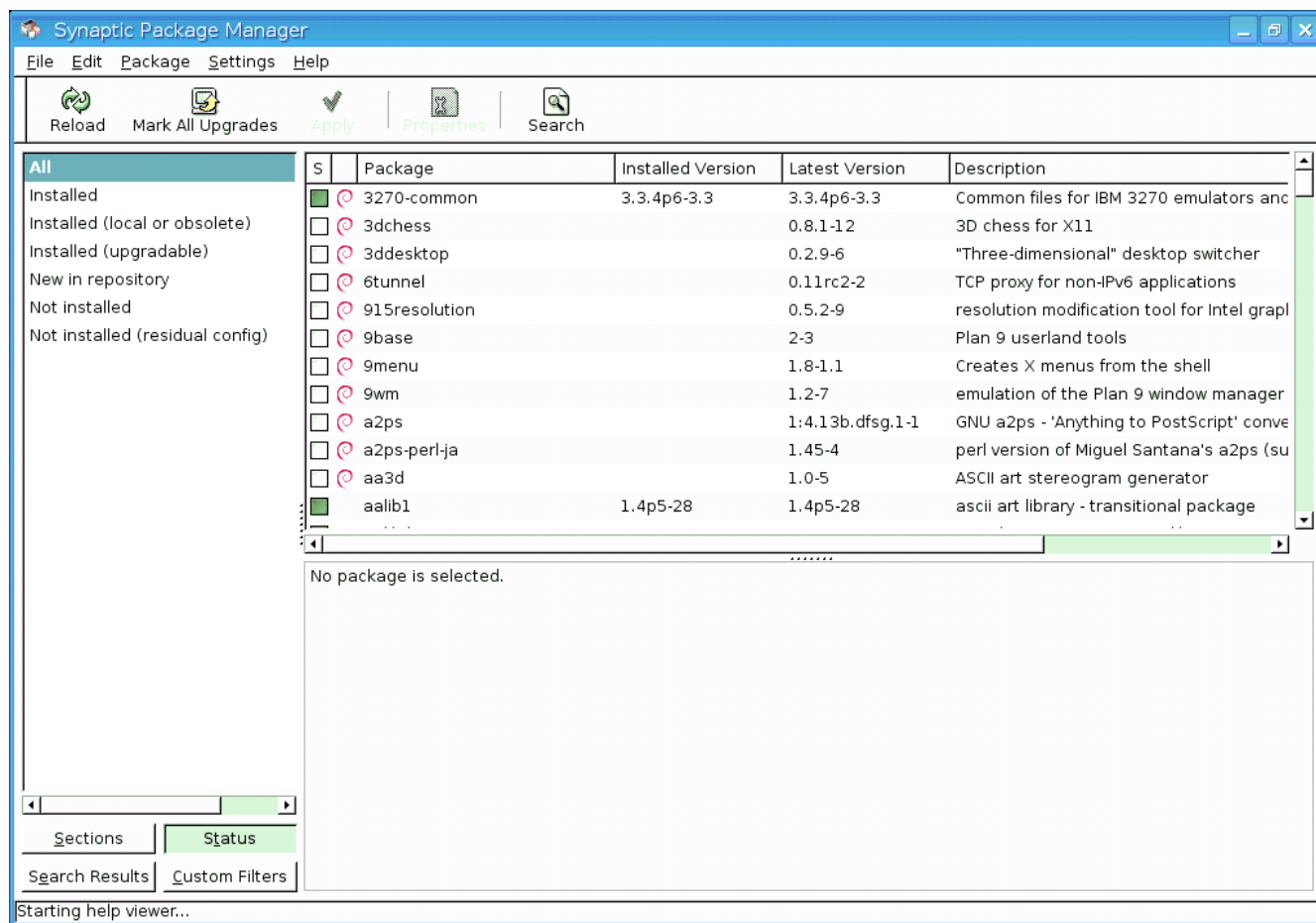
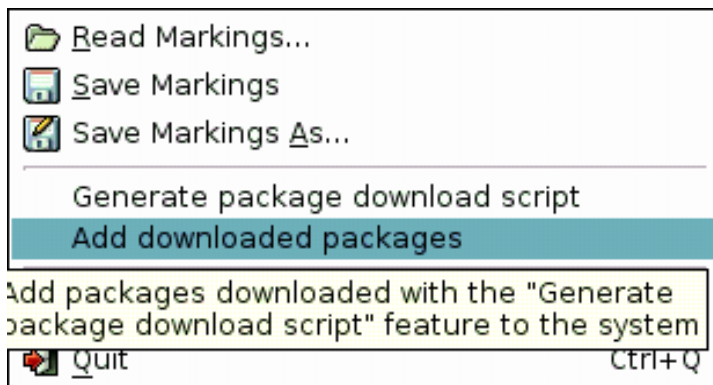


Repository Paket Debian dan turunannya dengan Synaptic

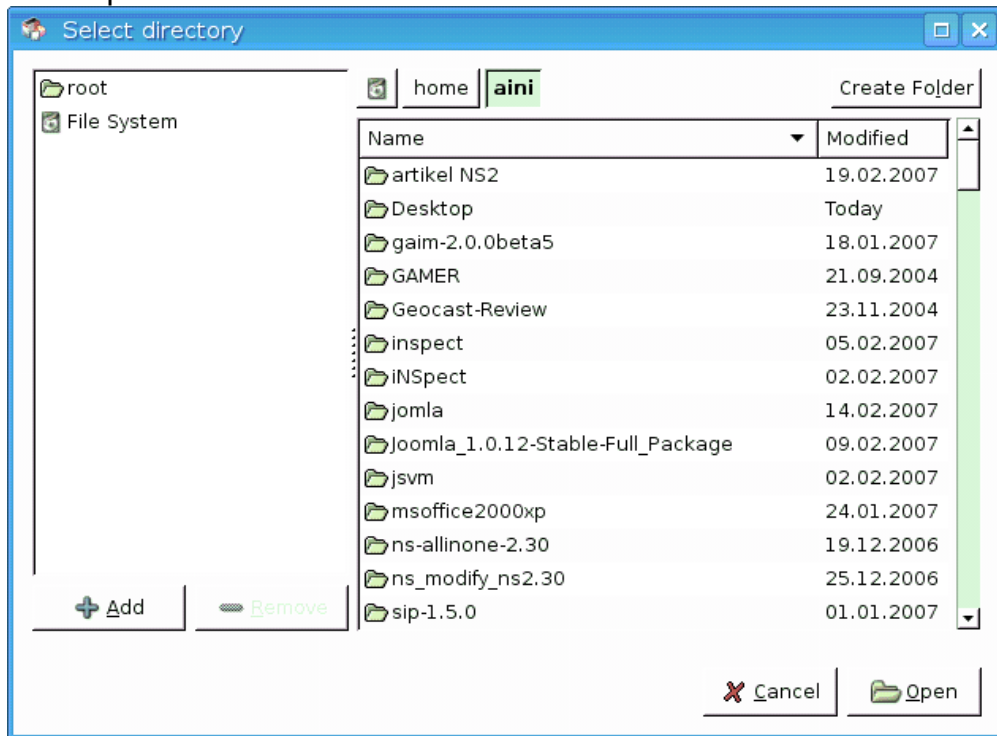
Tampilan Synaptic



1. Jika anda download paket sendiri dalam bentuk **deb**
File --> Add downloaded packages



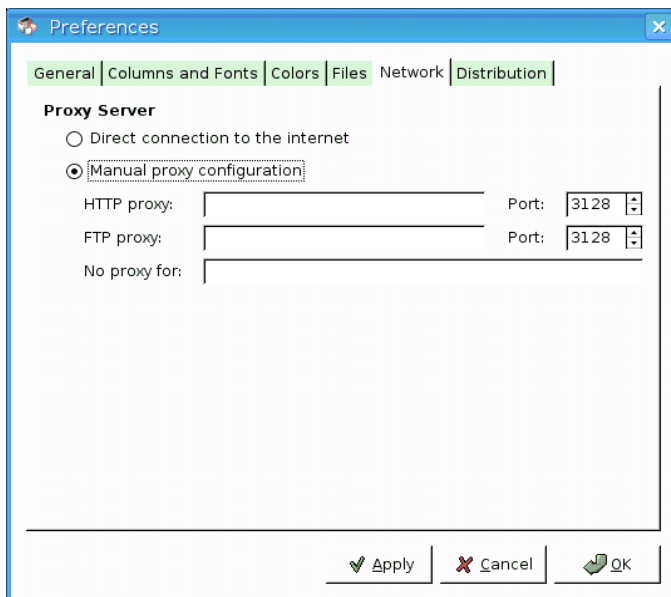
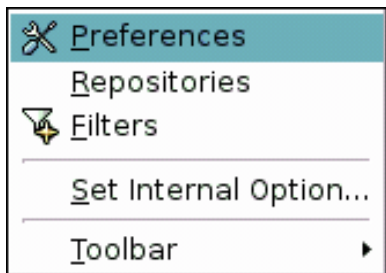
Folder tempat anda menaruh file deb tsb.



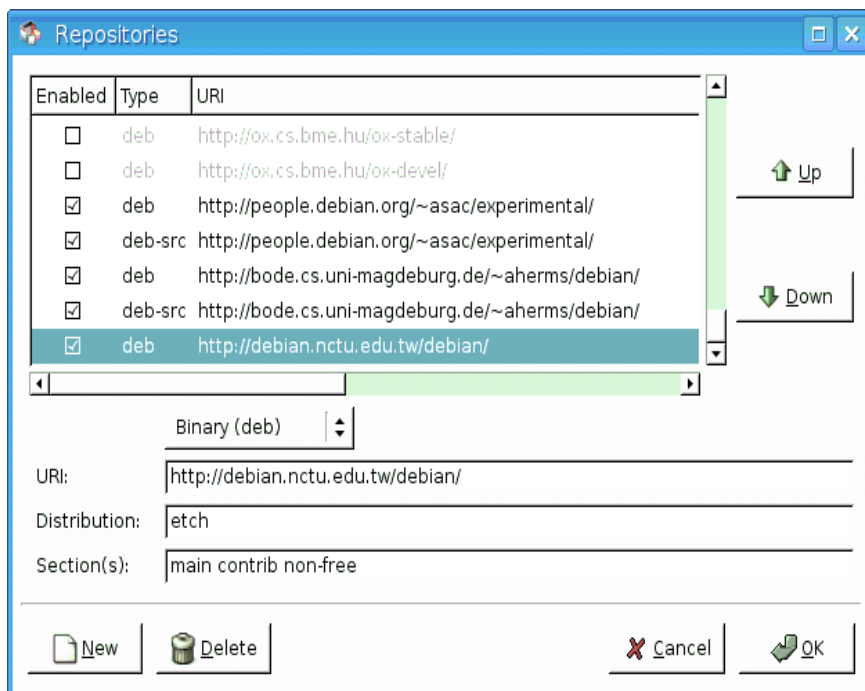
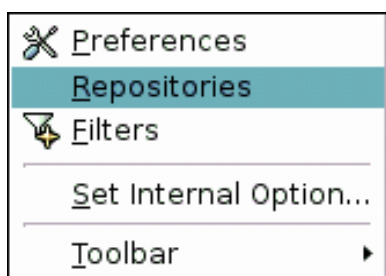
Jika telah selesai di **reload**



- 2. Ambil repository dari internet (mirror)
Setting --> Preference --> Network
Isi nilai proxy jika dibutuhkan



Setting --> Repositories --> New
Isi alamat mirror misalkan




Jika kita menuju <http://debian.nctu.edu.tw/debian/>, kita belum melihat macam-macam distribusi. Klik folder dist

Index of /debian

Name	Last modified	Size	Description
Parent Directory	28-Jun-2006 04:25	-	
Archive-Update-in-Progress-debian.NCTU.edu.tw	19-Mar-2007 20:04	1k	
dists/	17-Feb-2007 20:27	-	
doc/	18-Mar-2007 03:52	-	
indices/	18-Mar-2007 04:11	-	
ls-lR.gz	18-Mar-2007 04:11	4.0M	
ls-lR.patch.gz	18-Mar-2007 04:11	143k	
pool/	20-Dec-2000 04:10	-	
project/	02-Jan-2007 10:44	-	
tools/	12-Sep-2002 22:47	-	

Berikut list distribusi pada <http://debian.nctu.edu.tw/debian/dists>







Index of /debian/dists

<u>Name</u>	<u>Last modified</u>	<u>Size</u>	<u>Description</u>
 Parent Directory	19-Mar-2007 18:06	-	
 Debian3.1r5/	17-Feb-2007 23:59	-	
 etch-proposed-updates/	19-Mar-2007 20:15	-	
 etch/	19-Mar-2007 20:26	-	
 experimental/	19-Mar-2007 20:49	-	
 proposed-updates/	19-Mar-2007 20:51	-	
 sarge-proposed-updates/	19-Mar-2007 20:51	-	
 sarge/	17-Feb-2007 23:59	-	
 sid/	19-Mar-2007 20:51	-	
 stable-proposed-updates/	19-Mar-2007 20:51	-	
 stable/	17-Feb-2007 23:59	-	
 testing-proposed-updates/	19-Mar-2007 20:15	-	
 testing/	19-Mar-2007 20:26	-	
 unstable/	19-Mar-2007 20:51	-	

Misalkan distribusi yang kita pilih **etch** <http://debian.nctu.edu.tw/debian/dists/etch/>
Terlihat folder non-free, main, contrib (lihat keterangan sectin lebih lanjut pada <http://www.debian.org/doc/packaging-manuals/developers-reference/ch-resources.en.html#s4.6.1>)

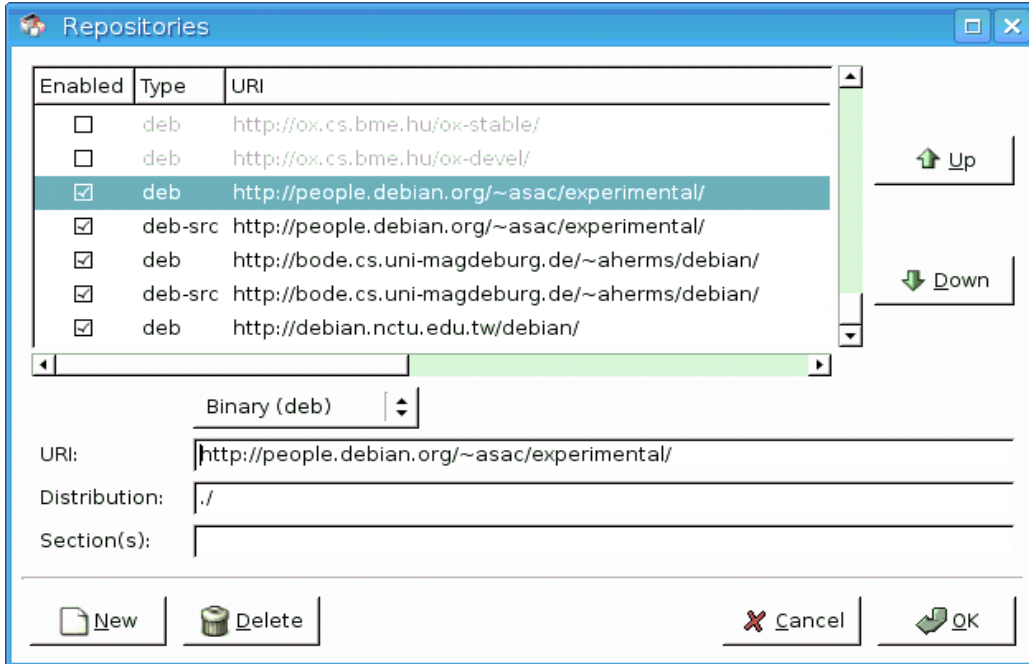
Ketik non-free main contrib pada bagian section

Index of /debian/dists/etch

<u>Name</u>	<u>Last modified</u>	<u>Size</u>
 Parent Directory	17-Feb-2007 20:27	-
 non-free/	10-Aug-2006 23:20	-
 main/	13-Jun-2006 00:41	-
 contrib/	10-Aug-2006 23:20	-
 Release.gpg	19-Mar-2007 16:11	1k
 Release	19-Mar-2007 16:11	73k

Jika menambah repository bukan berdasarkan distribusi, bisa langsung tanpa section. Contoh :

<http://people.debian.org/~asac/experimental/>



Index of [/~asac/experimental](http://people.debian.org/~asac/experimental/)

Name	Last modified	Size
 Parent Directory	04-Mar-2007 04:58	-
 Packages.gz	13-Oct-2006 17:24	10k
 Sources.gz	13-Oct-2006 17:24	3k
 enigmail-locale-ca_0.9x-20061010-1_all.deb	13-Oct-2006 11:02	41k
 enigmail-locale-cs_0.9x-20061010-1_all.deb	13-Oct-2006 11:02	43k
 enigmail-locale-de_0.9x-20061010-1_all.deb	13-Oct-2006 11:01	42k
 enigmail-locale-el_0.9x-20061010-1_all.deb	13-Oct-2006 11:02	48k
 enigmail-locale-es-ar_0.9x-20061010-1_all.deb	13-Oct-2006 11:02	41k
 enigmail-locale-es-es_0.9x-20061010-1_all.deb	13-Oct-2006 11:02	42k
 enigmail-locale-fi_0.9x-20061010-1_all.deb	13-Oct-2006 11:02	41k
 enigmail-locale-fr_0.9x-20061010-1_all.deb	13-Oct-2006 11:02	43k
 enigmail-locale-hu_0.9x-20061010-1_all.deb	13-Oct-2006 11:02	44k

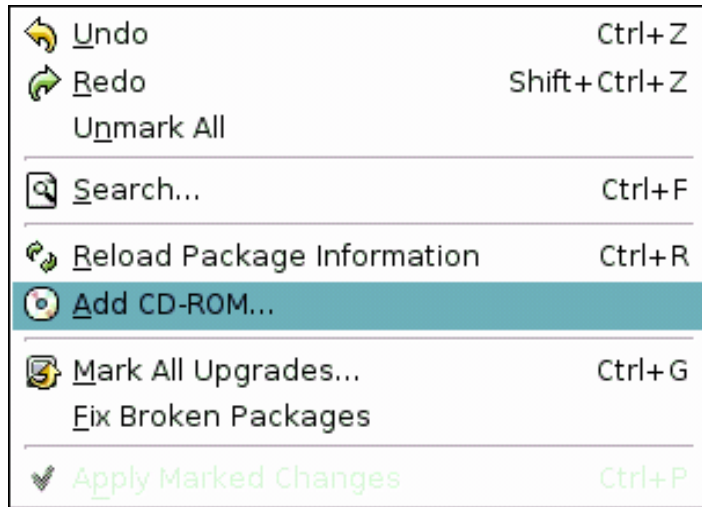
Nur Aini Rakhmawati

<http://ai23.wordpress.com/>

Jika telah selesai jangan lupa tekan



- 3. Nambah repository dari CDROM
- Pasang CD-ROM dulu yach
- Edit --> Add CD-ROM



Jika telah selesai jangan lupa tekan



Nur Aini Rakhmawati
<http://ai23.wordpress.com/>
<http://www.linuxchix.org/content/chix/conferences/iin>
19 Maret 2007