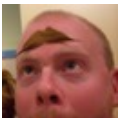


### System state

Old command	Systemd command	Description
halt	systemctl halt	Halts the system.
poweroff	systemctl poweroff	Powers off the system.
reboot	systemctl reboot	Restarts the system.
pm-suspend	systemctl suspend	Suspends the system.
pm-hibernate	systemctl hibernate	Hibernates the system.
pm-suspend-hybrid	systemctl hybrid-sleep	Hibernates and suspend the system.

### Services management

SysVinit command	Systemd command	Notes
service httpd start	systemctl start httpd.service	Start a service (not reboot persistent).
service httpd stop	systemctl stop httpd.service	Stop a service (not reboot persistent).
service httpd restart	systemctl restart httpd.service	Restart a service.
service httpd reload	systemctl reload httpd.service	Reloads the configuration files without interrupting pending operations.
service httpd condrestart	systemctl condrestart httpd.service	Restarts if the service is already running.
service httpd status	systemctl status httpd.service	Shows the status of a service.
service --status-all	systemctl list-units --type=service	Displays the status of all services.
ls /etc/rc.d/init.d/	systemctl list-unit-files --type=service	List the services that can be started or stopped.
chkconfig httpd on	systemctl enable httpd.service	Start service at next boot.
chkconfig httpd off	systemctl disable httpd.service	Service won't be started on next boot.
chkconfig httpd	systemctl is-enabled httpd.service	Check if a service is configured to start in the current environment.
chkconfig --list	systemctl list-unit-files --type=service or ls /etc/systemd/system/*.wants/	Print a list of services showing which runlevels they are configured for.
chkconfig httpd --list	ls /etc/systemd/system/*.wants/httpd.service	Show which runlevels a service is configured for.
chkconfig httpd --add	systemctl daemon-reload	Run this command after a change in any configuration file (old or new).



By **TME520** (TME520)  
[cheatography.com/tme520/](http://cheatography.com/tme520/)  
[tme520.com](http://tme520.com)

Published 8th April, 2015.  
 Last updated 12th May, 2016.  
 Page 1 of 2.

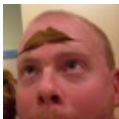
Sponsored by **CrosswordCheats.com**  
 Learn to solve cryptic crosswords!  
<http://crosswordcheats.com>

### Investigate

Command	Notes
systemctl get-default	Determine which target unit is used by default.
systemctl set-default multi-user.target	Change default boot target to multi-user.target.
journalctl -b	Show all messages from last boot.
journalctl -b -p err	Show all messages of priority level <i>ERROR</i> and more from last boot.
journalctl -p warning --since="2015-07-31 12:34:56" --until="2015-09-19 23:59:59"	View the messages of priority level <i>WARNING</i> or more from a certain date and time.
journalctl -f	Follow new messages <i>a la</i> tail -f.
journalctl -u SERVICE	Show logs for SERVICE.
journalctl /usr/sbin/httpd	Show all messages related to a specific executable.
journalctl --full	Display all messages without truncating any.
systemctl --state=failed	Display the services that failed to start.
systemctl list-units --type=target	Show current runlevel.
systemctl isolate graphical.target	Change the current runlevel (target).
systemctl rescue/emergency	Switch to Rescue (single user)/Emergency mode.
systemctl kill SERVICE.service	Gently kill SERVICE ( <i>SIGTERM</i> , 15).
systemd-cgls	Show the full systemd control group ( <i>cgroup</i> ) hierarchy as a tree.
systemctl show -p "Wants" multi-user.target	Find out what other units does a unit depend on.
systemctl list-jobs	Show jobs.

### Runlevels

SysVinit runlevel	Systemd target	Notes
0	runlevel0.target, poweroff.target	Halt the system.
1, s, single	runlevel1.target, rescue.target	Single user mode.
2, 4	runlevel2.target, runlevel4.target, multi-user.target	User-defined runlevels (identical to 3).
3	runlevel3.target, multi-user.target	Multi-user, non-graphical.
5	runlevel5.target, graphical.target	Multi-user, graphical.
6	runlevel6.target, reboot.target	Reboot.
emergency	emergency.target	Emergency shell.



By **TME520** (TME520)  
[cheatography.com/tme520/](http://cheatography.com/tme520/)  
[tme520.com](http://tme520.com)

Published 8th April, 2015.  
 Last updated 12th May, 2016.  
 Page 2 of 2.

Sponsored by **CrosswordCheats.com**  
 Learn to solve cryptic crosswords!  
<http://crosswordcheats.com>